

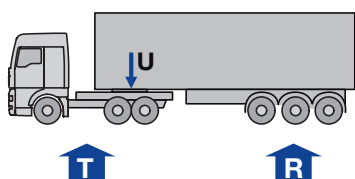
## Definition D-value

The construction of the fifth wheel coupling in connection with the vehicle is carried out by the vehicle manufacturer (construction according to Directive R55-01, Appendix 7).

The imposed load on the tractor and the D value are criteria for the load-bearing capacity of the fifth wheel couplings and mounting plates.

The D value calculates according to the following formula:

$$D = g \times \frac{0,6 \times T \times R}{T + R - U} \text{ (kN)}$$



Calculation example:

$$D = 9,81 \times \frac{0,6 \times 17 \times 33}{17 + 33 - 10,5} = 83,6 \text{ (kN)}$$

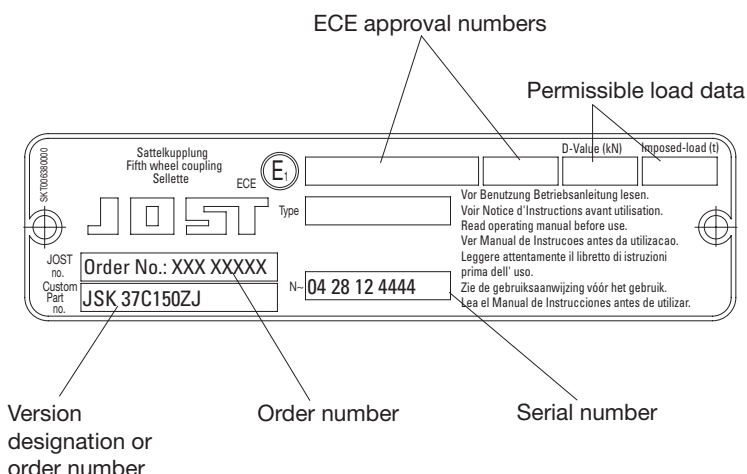
Given: T = 17 t  
R = 33 t  
U = 10,5 t

The permissible load data for JOST fifth wheel couplings can be found on the type plate or in the JOST product catalogue. They apply for the intended use in compliance with the Directive ECE-R55. If additional dynamic demands are to be placed on the coupling, e.g. by use on uneven road surfaces or construction sites, the imposed load and D value should not be fully used or a stronger fifth wheel coupling should be fitted, and/or you should ask JOST for advice.

A D value calculator for standard and ISO values is available at [www.jost-world.com](http://www.jost-world.com).

## Type plate

The fifth wheel type plate is attached, placed on the side of the coupling plate. When ordering spare parts, please quote the model designation and the serial number.



## Technical Specification

The ECE directives comprise a catalogue of internationally agreed, consistent technical rules for motor vehicles and add-on parts for motor vehicles. The ECE mark is to be attached to every vehicle or add-on part in motor vehicles for which an ECE approval has been issued. The mark consists of a circle with the capital letter “E” and the ID number of the country issuing the approval. Accordingly, “E1” stands for Germany.

Fifth wheel couplings and mounting plates are considered add-on parts for tractors used to connect tractors and trailers, making them vehicle connection parts that are subject to type approval.

For JOST fifth wheel couplings and mounting plates, mainly ECE Directive R55 (Mechanical coupling components of combinations of vehicles) is of relevance. Another important directive for our system solution is ECE Directive R10 (Electromagnetic compatibility).

The manufacturer’s specifications, the JOST mounting and operating instructions and the applicable national regulations need to be observed when mounting, operating, replacing or retrofitting fifth wheel couplings. In Germany, §§ 19, 20, 21 and 27 of the StVZO (German Road Traffic Licensing Regulation) apply.