

King Pin Finder (Fifth wheel with integrated camera)

Advantages at a glance

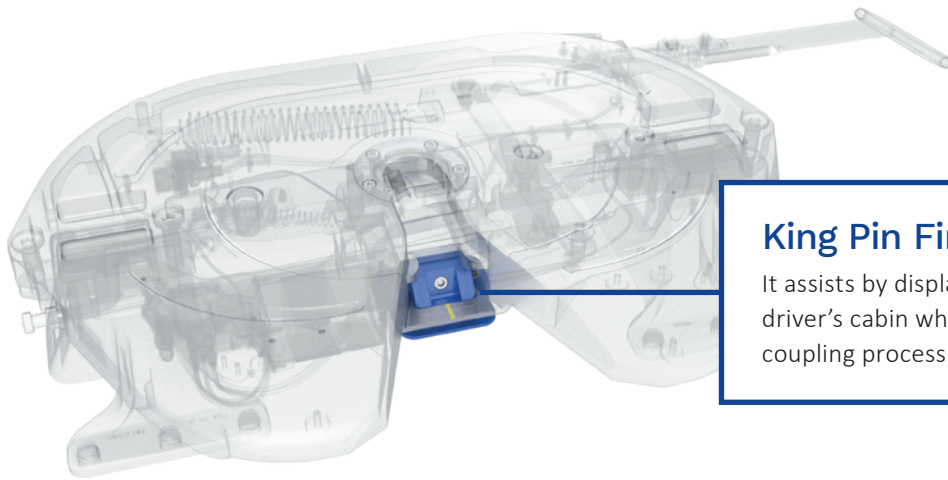
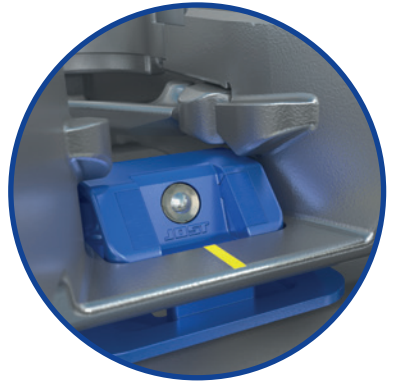
- Assistance system for the coupling process – unique in the world
- Ideal perspective on the coupling situation
- Optimal imaging in the dashboard or JOST monitor
- All components positioned safely, no risk of collisions
- The system is perfectly integrated into the fifth wheel with a minimal need of space
- To be combined with all safety and maintenance features of JOST fifth wheels

Application

- All common JOST fifth wheels
- Compatible with all JOST safety features
- For all use cases
- Especially suited for difficult coupling situations and frequent coupling processes

Technical Features

- Operating temperature: -30°C – 70°C
- Viewing angle: 89(H)/52(V)/103(D)
- ECE R55-01
- ECE R10-01
- ADR



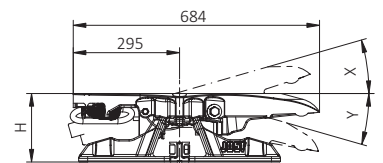
King Pin Finder

It assists by displaying a live camera image in the driver's cabin when driving backwards, making the coupling process considerably easier.

Selection table / Versions available

JSK 42

Order No.	H (mm)	X/Y	D value (kN)	Imposed load U (t)	Approval (ECE)	WA	ZL	Sensoric
JSK 42 K0 20 GV AA	150	8°	152	20	E1 55R-01 1245	Z	J	
JSK 42 K0 20 GZ AA	150	8°	152	20	E1 55R-01 1246	Z	J	ST*
JSK 42 K0 20 HB AA	150	8°	152	20	E1 55R-01 1246	LT5P ST	J	ST*
JSK 42 K0 20 GW AA	150	8°	152	20	E1 55R-01 1246	LT5P ST	J	
JSK 42 K0 20 HK AA	150	8°	152	20	E1 55R-01 1245	W+LT1P	J	
JSK 42 K0 20 HL AA	150	8°	152	20	E1 55R-01 1246	W+LT1P	J	ST*
JSK 42 K0 38GV AA	185	13°	152	20	E1 55R-01 1245	Z	J	
JSK 42 K0 38 GZ AA	185	13°	152	20	E1 55R-01 1246	Z	J	ST*
JSK 42 K0 38 HB AA	185	13°	152	20	E1 55R-01 1246	LT5P ST	J	ST*
JSK 42 K0 38 GW AA	185	13°	152	20	E1 55R-01 1246	LT5P ST	J	
JSK 42 K0 38 HK AA	185	13°	152	20	E1 55R-01 1245	W+LT1P	J	
JSK 42 K0 38 HL AA	185	13°	152	20	E1 55R-01 1246	W+LT1P	J	ST*



* Remote display (SKE501620200) and cable set (SKE002110300) have to be ordered separately

King Pin Finder

Spare parts



01



02



03



04



05



06



07



08



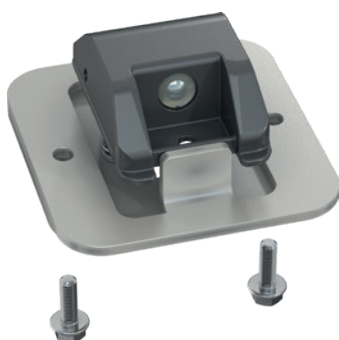
09



10



11



12

Item	Description	Remark	Order No.	per set
01	Monitor	7" TFT Monitor	SKE00002800	1
02	Extension cable	13m	SKE00008000	1
03	Adapter MAN MMT2	with 02	SKE00007300	1
04	Adapter MAN MMT3/Scania	with 02	SKE00007400	1
05	Adapter MAN MMT3 outside (OPHIK)	with 02	SKE00008600	1
06	Adapter Mercedes J9J	with 02	SKE00007600	1
07	Adapter Mercedes J9P & J8S	with 02	SKE00007700	1
08	Adapter Volvo/Renault A169	with 02	SKE00007800	1
09	Adapter Volvo FH/FM/FMX(SEM)	with 02	SKE00007900	1
10	Adapter Iveco Hiconnect/DAF TNR	with 02	SKE00008100	1
11	Adapter DAF New Gen (XF, XG, XG+)	with 02	SKE00008200	1
12	Kit Camera Standard*	compl.	SKE001214901	1
oZ	Protection plate top coat	on King Pin Finder	SKE000141100	1

* for KKS application please enquire separately



King Pin Finder
Information video