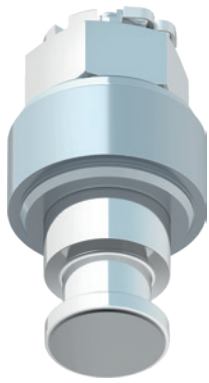


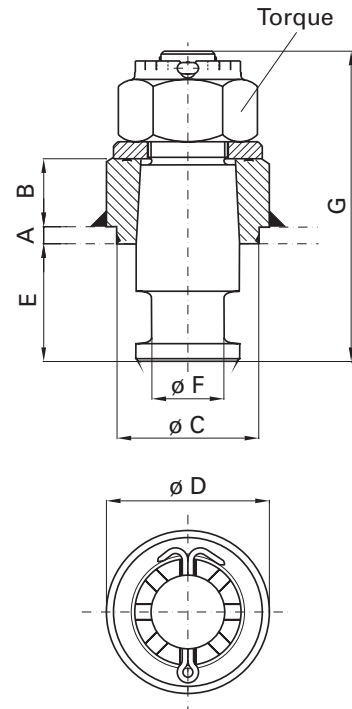
# KZ 1108 – 1116



KZ 1112

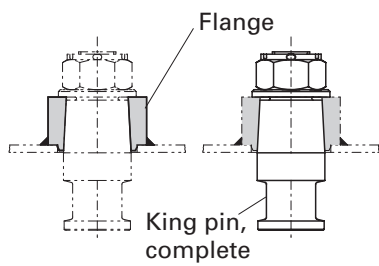


KZ 1116



## Selection table / Versions available

Order No. King pins, compl.	D value (kN)	A (mm)	B (mm)	C (mm)	D (mm)	E (mm)	F	G (mm)	Approval (ECE)	Torque (Nm)
KZ 1108	152	8	52	$\phi$ 100	$\phi$ 115	84	2"	219	E1 55R-01 0146	1200
KZ 1110	152	10	50	$\phi$ 100	$\phi$ 115	84	2"	219	E1 55R-01 0146	1200
KZ 1112	152	12	48	$\phi$ 100	$\phi$ 115	84	2"	219	E1 55R-01 0146	1200
KZ 1116	260	16	80	$\phi$ 140	$\phi$ 160	74	3½"	228	E1 55R-01 0151	1500

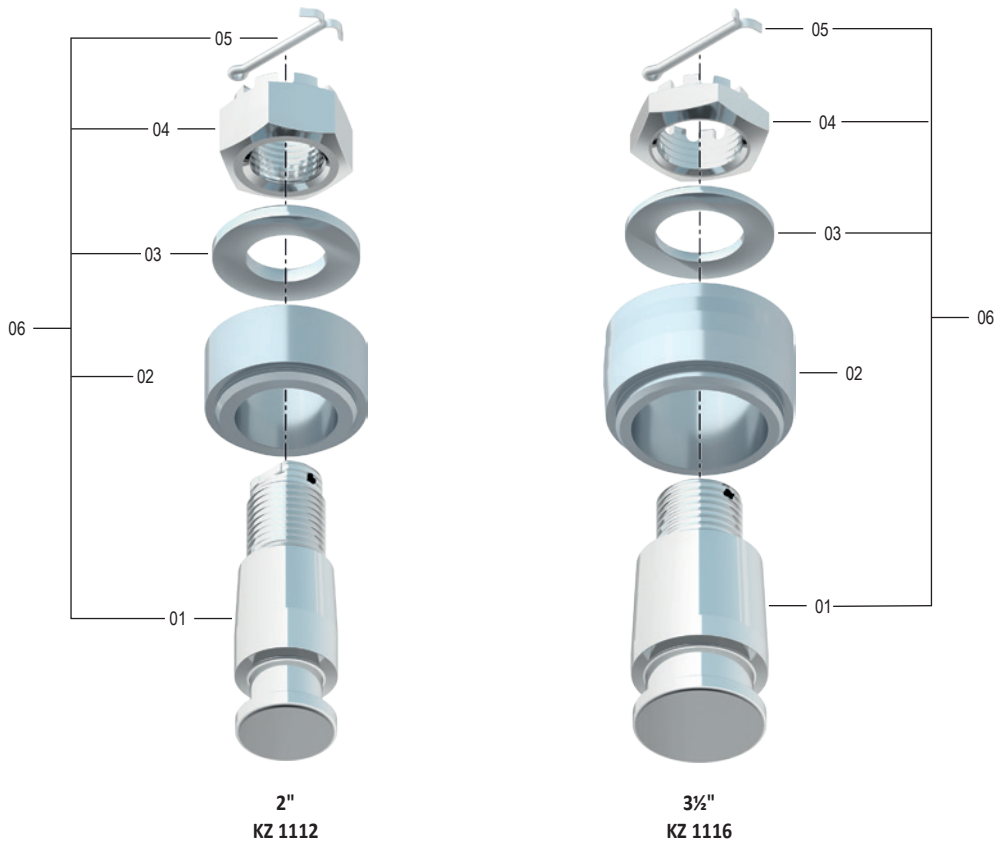


### Delivery includes

- Pin complete/flange

# KZ 1108 – 1116

## Spare parts



Item	Description	Remark	Order No.	per King pin
01	Pin	for KZ 1116	KZ 1116-01	1
01	Pin	for KZ 1108, KZ 1110, KZ 1112	KZ 1112-01	1
02	Mounting flange	for KZ 1112	KZ 1112-02	1
02	Mounting flange	for KZ 1110	KZ 1110-02	1
02	Mounting flange	for KZ 1116	KZ 1116-02	1
02	Mounting flange	for KZ 1108	KZ 1108-02	1
03	Washer	for KZ 1116	KZE 1116-03	1
03	Washer	for KZ 1108, KZ 1110, KZ 1112	KZE 1112-03	1
04	Castle nut	for KZ 1108, KZ 1110, KZ 1112	KZE 1112-04	1
04	Castle nut	for KZ 1116	KZE 1116-04	1
05	Split pin	for KZ 1116	KZE 1116-05	1
05	Split pin	for KZ 1108, KZ 1110, KZ 1112	KZE 1112-05	1
06	King pin, compl.	for KZ 1108, KZ 1110, KZ 1112	KZ 1112-06	1
06	King pin, compl.	for KZ 1116	KZ 1116-06	1

