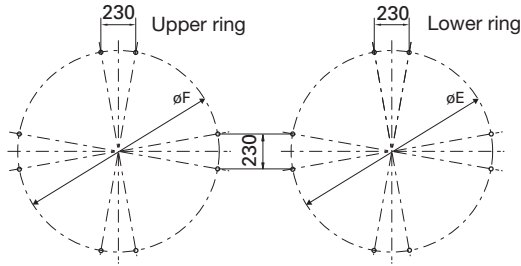
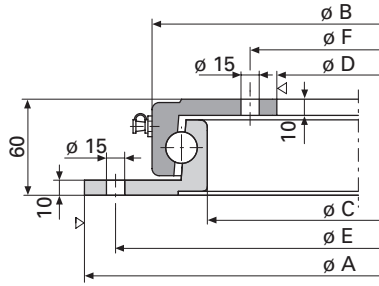


# Ball bearing turntables · KLK ND



## Specification

- E-coating
- Standard
- Drilled/Undrilled
- Special drill templates available upon request
- Lubricant dispenser (optional)

## Selection table / Versions available

Order No.	Permitted axial load (kN)	A (mm)	B (mm)	C (mm)	D (mm)	E (mm)	F (mm)	Weight (approx. kg)
KLK 950 ND	60	952	885	821	750	920	780	52
KLK 1100 ND	70	1102	1027	963	890	1070	920	61

