

# Landing gears · Modul B

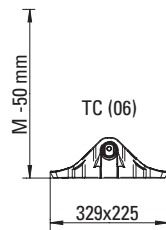
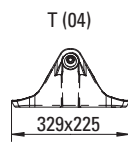
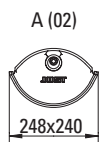
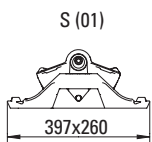
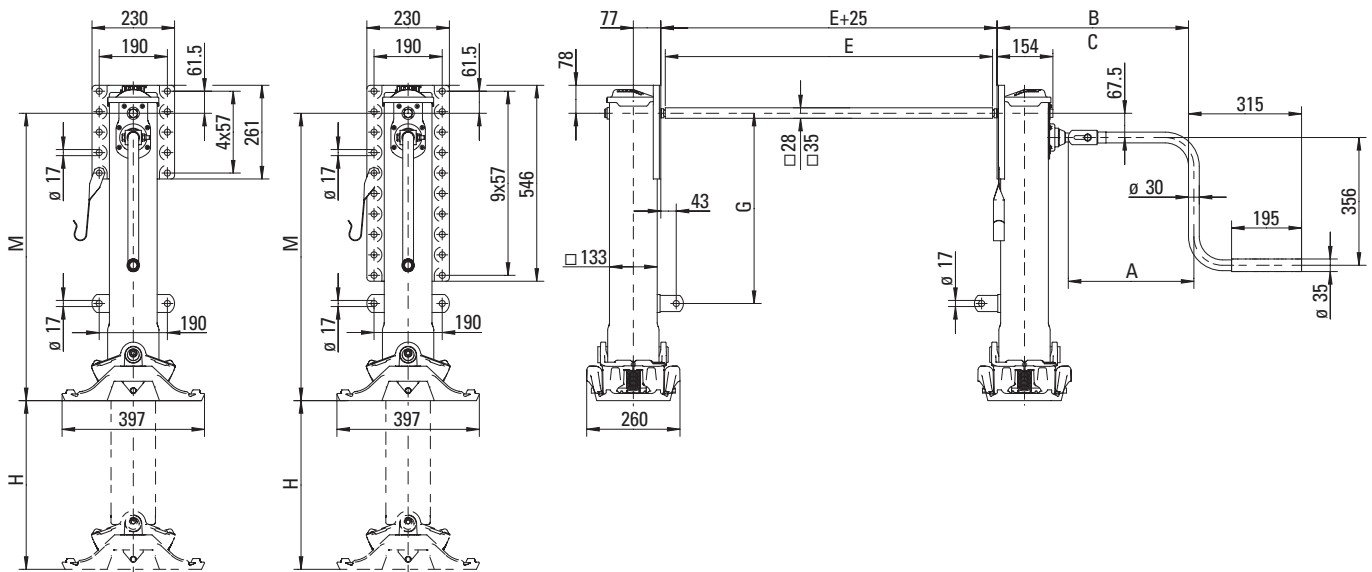
## Advantages at a glance

- Very versatile use
- Significant gain in lifting force
- Modular system and extensive spare parts catalogue

## Technical Features

- Six mounting heights
- Easy-to-assemble and easy-to-replace foot system with four different foot types
- S foot with the longest drift ( $\pm 140$  mm) and largest footprint
- Additional reinforcements for lateral-force resistance
- Three plate positions (high, low, double)
- Also available with two side operation and special crank

## Technical Specification



The drift for the S and A foot is  $\pm 140$  mm.  
Dimensions A, B, C and E, see Page 132.

## Technical Data (per kit)

Characteristic	Value
Lifting capacity	24 t
Static test load	50 t
Lift per turn of handle	
– Low gear	0,9 mm
– High gear	15,0 mm
Crank force at 16 t lifting capacity	210 N



## Components and article numbers

M			O	D	Please order separately!	
Mounting height			Back plate	Type of foot	U	L
M	H	G			Crank w. crank parking hook	Connection shaft
					A	E
01 = 900	560	630	01 = Position top	00 = without foot	00 = without crank	00 = without
02 = 850	520	580	02 = Position bottom*	mounted	JS U01 = 350	JS L01 = 1340
03 = 800	470	530	03 = Double plate*	01 = S foot	JS U02 = 415	JS L02 = 1450
04 = 750	430*	480		02 = A foot	JS U03 = 450	JS L03 = 1470
05 = 700	400*	430		04 = T foot	JS U04 = 480	JS L04 = 1500
06 = 650	350*	380		06 = TC foot**	JS U05 = 520	JS L05 = 1505
	<i>reinforced</i>				JS U07 = 570	JS L06 = 1575
21 = 900	470	630			JS U08 = 620	JS L07 = 1605
22 = 850	430	580				JS L08 = 1635
23 = 800	400	530				JS L09 = 1700
24 = 750	350*	480				JS L10 = 1790

\* **no bracing brackets** are supplied for **the combination of mounting heights 04, 05, 06, 24** with **back plate 02, 03**. See accessories for loose bracing brackets.

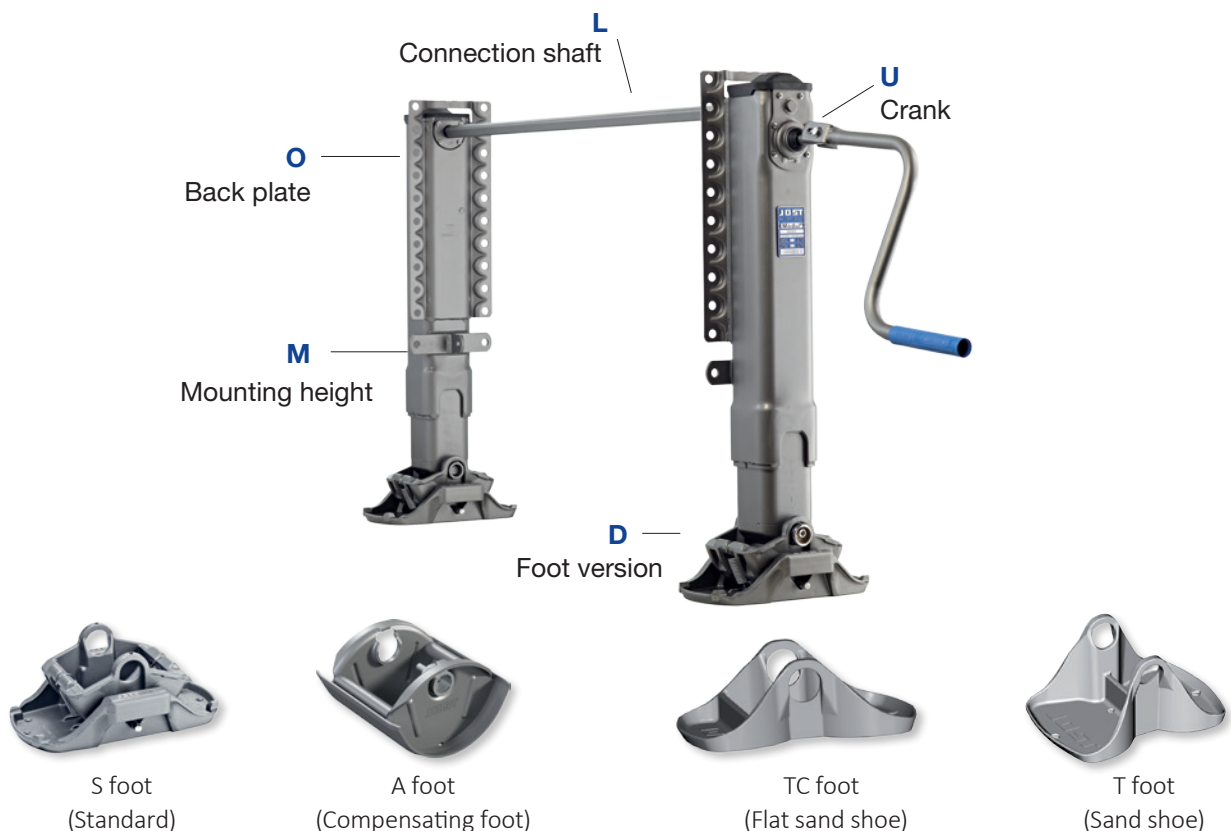
\*\* can be used without restriction on Modul legs produced after week 22/02. On Modul legs produced before that the angle of movement is reduced by  $\pm 10^\circ$ .

Landing gear with foot "R" (Wheels) please refer to MODUL CW (see page 172).

## Individual components

The module components **U** (crank with crank parking hook) and **L** (connection shaft) must be ordered separately and are available individually. The type of feet **D** are likewise available separately; see Page 134.

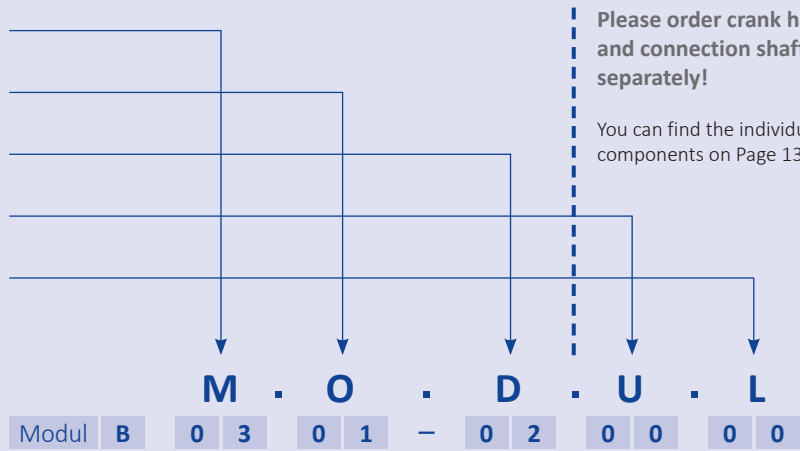
## Modul B – components and foot versions



### Example of an article number for one set

The complete article number to order the Modul is made up of the article numbers of the various components. First choose **the individual components**. Each component has a 2-figure article number. List **all the components (in other words all the article numbers)** in sequence.

- M** Mounting height 800 mm = **03**
- O** Back plate top = **01**
- D** Foot version (A foot) = **02**
- U** Crank length = **00**
- L** Connection shaft = **00**

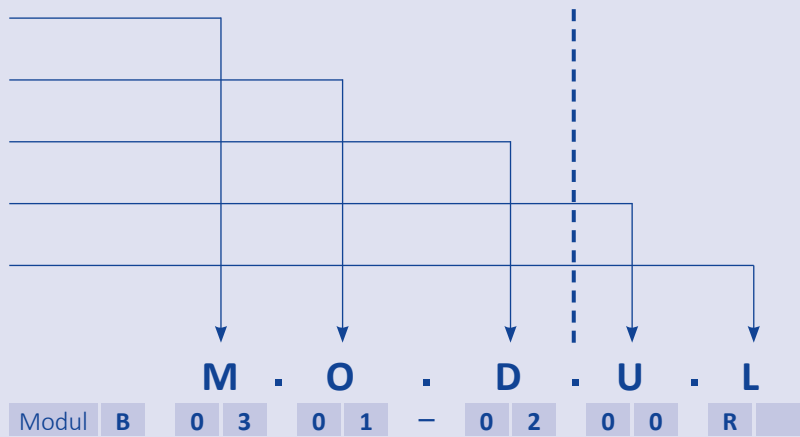


Example: Mounting height 800 mm; back plate top, A foot; crank length 350 mm; connection shaft 1470 mm  
**= Article number B0301-02000 + JS U01 + JS L03**

### Example of an article number for a single leg

If you order a **single leg** the **connection shaft** will not be supplied. In this case enter 00 at **U** and at **L** an **R** for right (crank side) or an **L** for left.

- M** Mounting height 800 mm = **03**
- O** Back plate top = **01**
- D** Foot version (A foot) = **02**
- U** Crank length = **00**
- L** Connection shaft = **R or L**

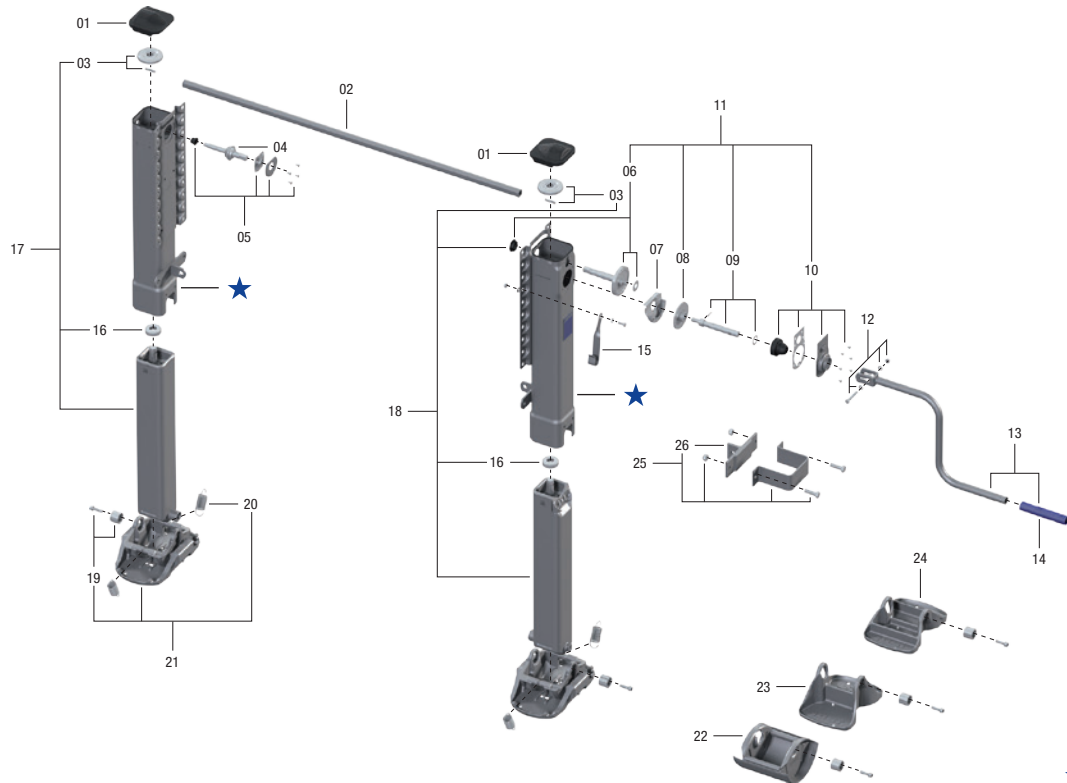


Example: right side; mounting height 800 mm; back plate top, A foot  
**= Article number B0301-0200R**



# Modul B

## Spare parts



★ no spare part

Item	Description	Remark	Order No.	per kit
01	Cover		JS E0046100	2
02	See individual components			
03	Bevel gear with bolts	from 020719/0126097	JS E0058600	2
04	Shaft		JS E0001500	1
05	Bearing	compl.	JS E0046200	1
06	Shaft with bearing	a	JS E0058700	1
07	Grease tank	a	JS E0002000	1
08	Gear	a	JS E0055800	1
09	Crank shaft	compl.	JS E0046500	1
10	Bearing holder	compl.	JS E0058800	1
11	Drive	compl., with 06, 08, 09 + 10, a, c	JS E0083700	1
12	Bolts, washers, nuts		JS E0043100	1
13	See individual components			
14	Crank bushing		JS E0042700	1
15	Crank parking hook	for crank 350 mm, (JS U01), b	JS E0040200	1
15	Crank parking hook	for crank 415–480 mm, (JS U02-JS U04), b	JS E0040201	1
15	Crank parking hook	for crank 520–620 mm (JS U05-JS U08), b	JS E0040202	1
16	Axial bearing ****		JS E0066401	2
17	Mh-01/900 inner tube l. + spindle	with 16 + 03	JS E0056401	1
17	Mh-02/850 inner tube l. + spindle	with 16 + 03	JS E0056402	1
17	Mh-03/800 inner tube l. + spindle	with 16 + 03	JS E0056403	1
17	Mh-04/750 inner tube l. + spindle	with 16 + 03	JS E0056404	1
17	Mh-05/700 inner tube l. + spindle	with 16 + 03	JS E0056405	1
17	Mh-06/650 inner tube l. + spindle	with 16 + 03	JS E0056406	1
18	Mh-01/900 inner tube r. + spindle	with 16 + 03	JS E0056201	1
18	Mh-02/850 inner tube r. + spindle	with 16 + 03	JS E0056202	1
18	Mh-03/800 inner tube r. + spindle	with 16 + 03	JS E0056203	1
18	Mh-04/750 inner tube r. + spindle	with 16 + 03	JS E0056204	1
18	Mh-05/700 inner tube r. + spindle	with 16 + 03	JS E0056205	1
18	Mh-06/650 inner tube r. + spindle	with 16 + 03	JS E0056206	1
19	Nut and bolt**		JS E1043300	2
20	Spring		JS E0012900	4
21	S-Foot	compl., with 19 + 20***	JS D01	2
22	A-Foot	compl., with 19***	JS D02	2

Item	Description	Remark	Order No.	per kit
23	T-Foot	compl., with 19***	JS D04	2
24	TC-Foot	compl., with 19* & ***	JS D06	2
25	Clamp with angle	with 26	JS E010.010	2
26	Angle		JS E010.001	2
a	From 020121/0009246			
b	Crank kit see Page 132			
c	Also module 2000 (replacement for JS E0059200)			
*	With the 06/TC foot version, item 30, the installation height Mh is reduced by 50 mm			
**	Nut and bolt up to September 2009 Order No. JS E1043300 (4 per Kit)			
**	Nut and bolt from September 2009 Order No. JS E1043300 (2 per Kit)			
***	Only one fitting included in scope of delivery			
****	Replaces version with washer			

## Individual components

Item	Description	Remark	Order No.	per kit	Item	Description	Remark	Order No.	per kit
02	Connection shaft 1340 mm		JS L01	1	13	Crank 350 mm w. parking hook	with 12, 14 + 15	JS U01	1
02	Connection shaft 1450 mm		JS L02	1	13	Crank 415 mm w. parking hook	with 12, 14 + 15	JS U02	1
02	Connection shaft 1470 mm		JS L03	1	13	Crank 450 mm w. parking hook	with 12, 14 + 15	JS U03	1
02	Connection shaft 1500 mm		JS L04	1	13	Crank 480 mm w. parking hook	with 12, 14 + 15	JS U04	1
02	Connection shaft 1505 mm		JS L05	1	13	Crank 520 mm w. parking hook	with 12, 14 + 15	JS U05	1
02	Connection shaft 1575 mm		JS L06	1	13	Crank 570 mm w. parking hook	with 12, 14 + 15	JS U07	1
02	Connection shaft 1605 mm		JS L07	1	13	Crank 620 mm w. parking hook	with 12, 14 + 15	JS U08	1
02	Connection shaft 1635 mm		JS L08	1					
02	Connection shaft 1700 mm		JS L09	1					
02	Connection shaft 1790 mm		JS L10	1					

